



CHILD SAFE

2" WOOD & FAUX WOOD BLINDS INSTALLATION INSTRUCTIONS



MAXXMAR WINDOW FASHIONS

150 Bartor Road, Toronto, Ontario M9M 1H1

Tel: 416-742-6299 - Toll Free: 1-866-916-6299 - Fax: 416-742-1772

www.maxxmar.com



WARNING STRANGULATION HAZARD

Young children can be strangled by cords. Immediately remove this product if a cord longer than 22 cm or a loop exceeding 44 cm around becomes accessible.

MISE EN GARDE RISQUE D'ÉTRANGLEMENT

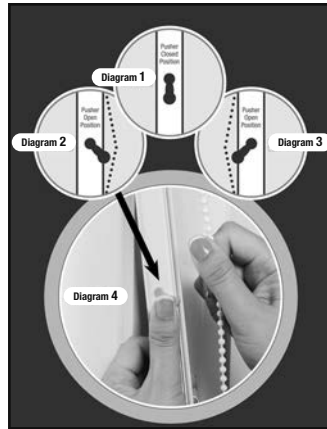
Les enfants en bas âge peuvent s'étrangler avec des cordes. Enlevez immédiatement ce produit si une corde mesurant plus de 22 cm devient accessible ou si le contour d'une boucle de plus de 44 cm devient accessible.

DecoraSafe™ Features Two Operating Mechanisms: Crank System & Pusher System

Crank System

Easy and Child Safe

This mechanism is operated by a **crank** located in the wand. The shade is operated by inserting the **crank handle** into the wand and simply turning the handle. The crank handle can be removed and stored away until it is needed again.



Pusher System

Maxxmar's NEW Exclusive and Patented Operating Mechanism

The Pusher System operates as follows:

- A) locate the **Chain Pusher Tab** (see Diagram 1).
- B) push the chain pusher tab as shown (see Diagram 2 & 3),
- C) now you have access to a small section of the chain to operate the shade (see Diagram 4) and,
- D) when done, just release the chain and it will automatically retract into the wand.

The chain remains concealed and inaccessible to children at all times.

Getting Started

A few simple tools are required:

- Measuring tape
- Power drill, drill bits (1/16") and/or screw drivers
- Phillips driver bit
- Pencil
- Level



Additional fasteners other than those sent with your shade may be required depending on the mounting surface. Wallboard and plaster require the use of anchors such as expansion toggle bolts. Brick, tile or stone need special plugs and drill bits. Remember to always pre-drill holes in wood to avoid splitting.

Bracket Installation

Shades are shipped with the required number of brackets for proper installation.

End brackets should be located approximately 3" from either end.

Depending on the width of the shade, additional brackets may be necessary, evenly spaced between the two end brackets.

Using the installation bracket as a template, measure to the edge of the bracket and mark the hole locations with a pencil for drilling.

Brackets must be in line and level. Shim brackets on inside mounts if necessary. The head rail must be level for the shade to operate properly.

Shade Width	# of Brackets
Up to 40"	2
40" - 72"	3
72" - 84"	4
84" and up	5

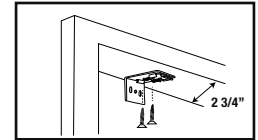


Make Sure Mounting Surface is Level

Mounting Options & Instructions

Inside Mount

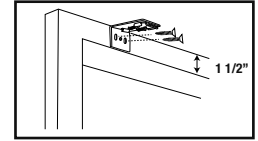
A minimum of **2 3/4"** is needed to fully recess the shade.
 Make sure the brackets are level and aligned.
 Attach each bracket using two screws.



Inside Mount
 Minimum 2 3/4" Surface

Outside Mount

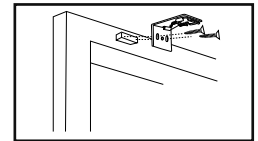
The minimum mounting height for outside mounted shades is **1 1/2"**.
 Make sure the brackets are level and aligned.
 Attach each bracket using two screws.



Outside Mount
 Minimum 1 1/2" Surface

Spacer Blocks (optional)

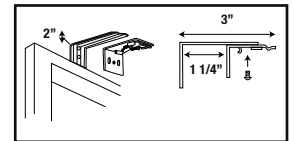
Each spacer block projects brackets **3/8"** away from mounting surface.
 Make sure the brackets are level and aligned.
 Attach each bracket using two screws. Screws should be long enough to secure the bracket to the mounting surface.



Outside Mount with Spacer Blocks
 Additional 3/8" Projection

Extension Brackets (optional)

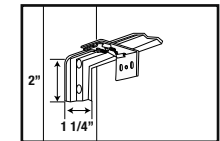
Optional extension brackets are used to project the back of the shade up to **3"** from the mounting surface. Attach the mounting bracket to the extension bracket with the nut and bolt provided.



Outside Mount with Extension Brackets
 Minimum 2" Surface

Side Mount (optional)

Measure from window sill up to desired mounting position on each side of the window frame. Mark position.
 Mount side mount brackets on each side of window frame as shown. Make sure the head rail will sit perfectly level.
 Once side mount brackets are installed and properly positioned, attach the mounting brackets using the nuts and bolts provided.



Side Mount
 Minimum 2" Surface Height
 Minimum 1 1/4" Surface Depth

PLEASE NOTE: brackets must be installed where an "X" has been indicated on the headrail. Proper positioning of the brackets is required for the product to function and operate properly.

Bracket & Headrail Installation Instructions - Quick Overview

CASSETTE/FASCIA VALANCE/BRAKET	REQUIRED TOOLS & MATERIALS	MOUNT	INSTRUCTION	REFERENCE	REFERENCE
Bracket for 2" Wood & Faux Wood Horizontal Blinds 	<ol style="list-style-type: none"> 1. Drill or Screw Driver 2. Installation Screws (provided with product) 3. Installation Bracket (provided with product) 	<ol style="list-style-type: none"> 1. Insert installation screws into open holes/slots. 2. Mount and secure brackets to ceiling or wall. Brackets are universal and can accommodate both mounting methods. 3. Verify brackets are secure on left and right side. 	<ol style="list-style-type: none"> 1. Click bracket into headrail to lock into position. 2. Make sure brackets are secured on both left and right side. 		

Box Bracket & Headrail Installation Instructions - Quick Overview

CASSETTE/FASCIA VALANCE/BRAKET	REQUIRED TOOLS & MATERIALS	MOUNT	INSTRUCTION	REFERENCE	REFERENCE
Box Bracket for 2" Wood & Faux Wood Horizontal Blinds 	<ol style="list-style-type: none"> 1. Drill or Screw Driver 2. Installation Screws (provided with product) 3. Installation Bracket (provided with product) 	<ol style="list-style-type: none"> 1. Insert installation screws into open holes/slots. 2. Mount and secure brackets to ceiling or wall. Brackets are universal and can accommodate both mounting methods. 3. Verify brackets are secure on left and right side. 	<ol style="list-style-type: none"> 1. Click bracket into headrail to lock into position. 2. Make sure brackets are secured on both left and right side. 		

Operating and Valance Installation Instructions

Cordless Blinds



1. Raise or lower by pushing up or pulling down on the bottom bar.

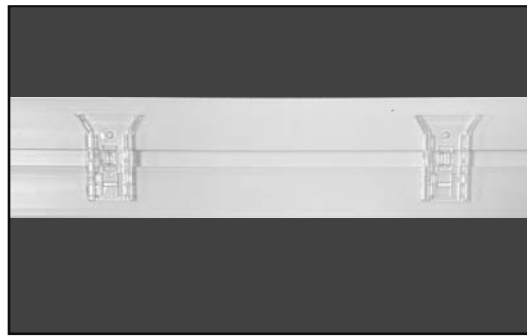


2. Turn the "Tilt-Wand" to control the tilting action of the slats.

Decorative Valance

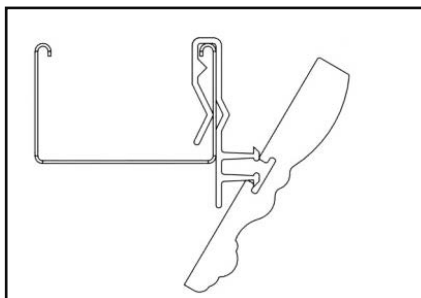


1. Attach one set of mounting clips to the headrail.

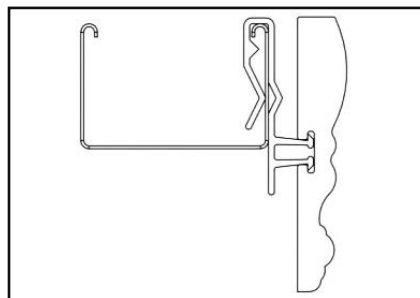


2. Attach one set of mounting clips to the valance.

Alternative Bracket Style and Mounting the Valance to Headrail



1. Attach one set of mounting clips to the headrail.

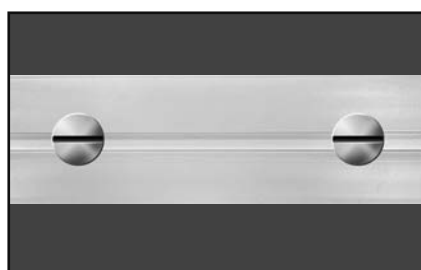


2. Attach one set of mounting clips to the valance.



3. Mount valance to headrail by sliding clips together.

Mounting the Valance to Headrail with Magnets



1. Attach magnets to valance.



1. Attach valance with magnets to headrail.