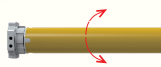


1. set top limit

PS: No action in 30s, motor will quit limit set mode automatically



press "SET" on wand for 1 second



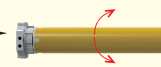
motor will jog one time enter limit setting mode



press Up (or down) button to adjust the shade to top limit position



Press "SET" button on wand again for 1 second



motor jog again to confirm now top limit is set

2. set bottom limit

PS: No action in 30s, motor will quit limit set mode automatically



move the shade to bottom limit position



Press "SET" button on wand for 1 second



motor jog one time enter limit setting mode



Press "SET" button on wand for 1 second again



motor jog again to confirm now bottom limit is set

3. Favorite intermediate limit position setting

Tips: Intermediate limits can only be set between top & bottom limits. you can set 4 favorite intermediate limits

After you set the intermediate limit, if you press UP or DOWN button one time, motor will move from current position to next limit position; if you press UP or DOWN button two times quickly (within 1 second), motor will skip all the intermediate limits, moving to top or bottom limit position



move the shade to favorite limit position



Press SET on bottom of handle



Motor jog once Enter limit set mode

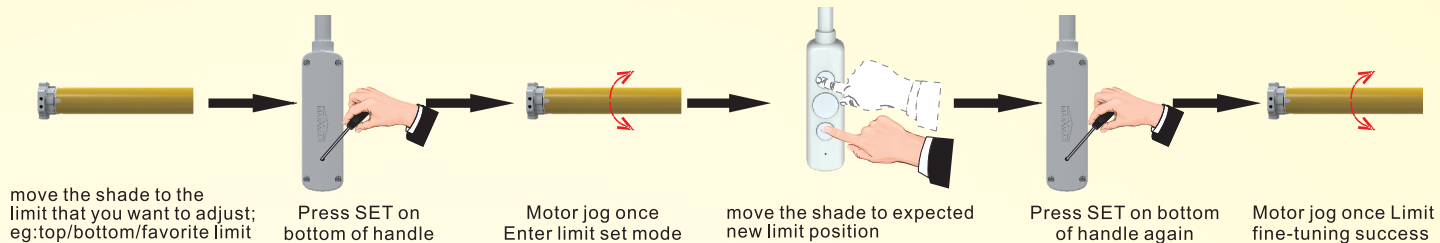


Press SET on bottom of handle again



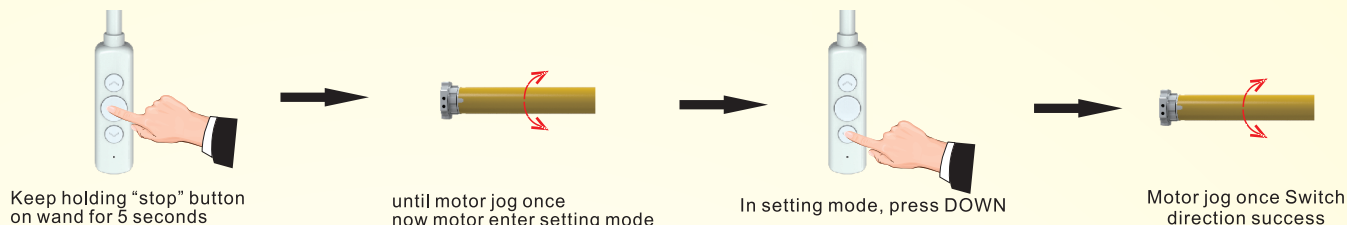
Motor jog once, limit position save success

4. Adjust limit position



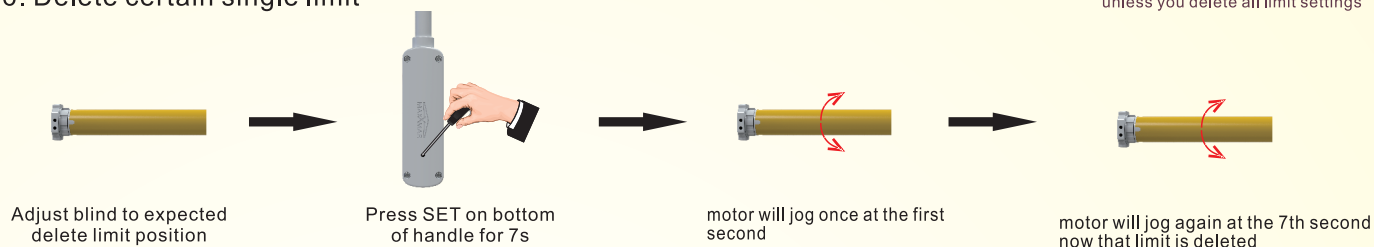
5. Switch motor running direction

Tips: if you press up/down on wand, while the shade go to opposite direction then you could switch motor running direction



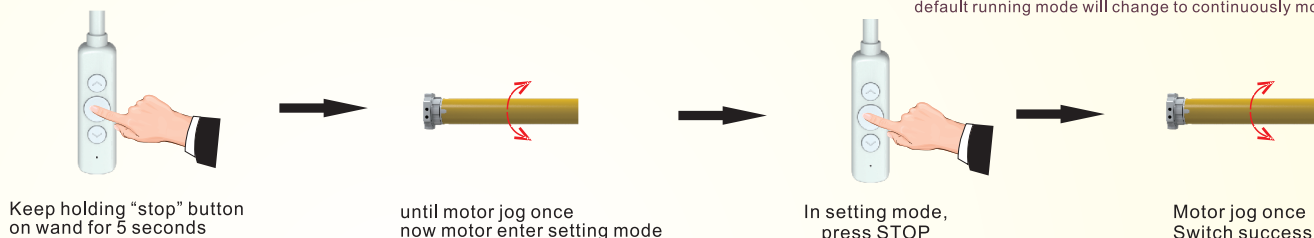
6. Delete certain single limit

Tips: the first limit can not be deleted by this method unless you delete all limit settings



7. Switch motor running mode

Tips: before top & bottom limits finish settings, motor default running mode is dot moving; After motor top & bottom limits finish setting, its default running mode will change to continuously moving mode

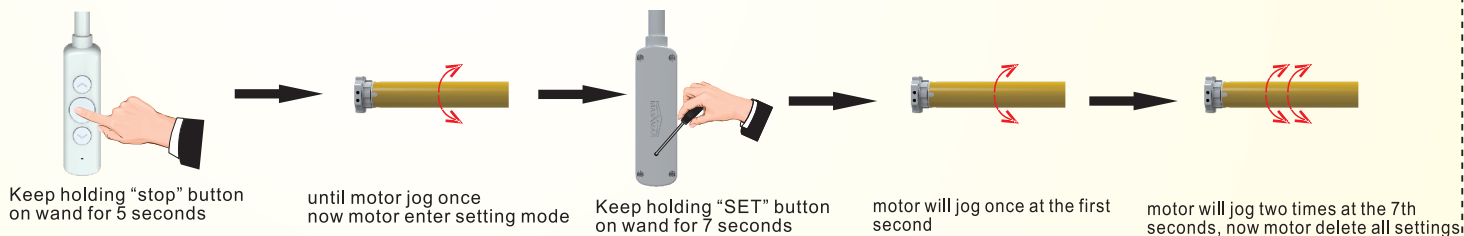


8. Delete all settings (Factory reset)

There are two ways to do factory reset

Tips: this operation will delete all the limits settings and restore to factory default mode

Method 1



Method 2

